



[Introduction To KeyPro](#)
[Editor Keys](#)
[Technical Specifications](#)
[License and Warranty Disclaimer](#)

[Commands](#)
[The Menu](#)
[Known Bugs](#)

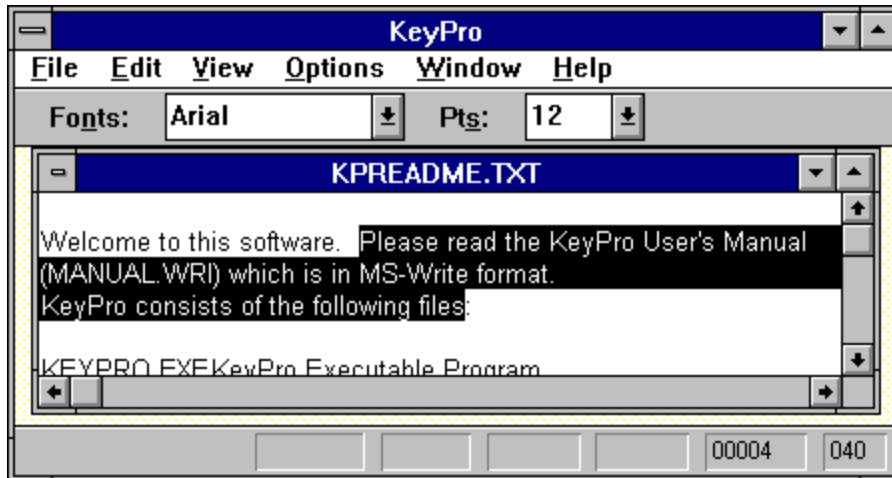
Introduction To KeyPro

KeyPro is an text file editor for Windows. Its features include the display of text in both fixed and variable width fonts, unlimited file size capacity (except by system memory), optional tab stop settings, optional text and background colors, a toolbar with font and point size controls, a status bar with line and column number display, text selection via SHIFT+(arrow key) combinations, clipboard operations (Cut, Copy, Paste, and Delete), text search and replacement, printing, command line support, and persistent option settings (optional) via an initialization file.

See also: [The Menu: An Illustrated Guide](#)

The Menu: An Illustrated Guide

For information on a menu command, click the appropriate submenu in the diagram below and select the menu command in the pop-up window.



Commands

File Menu

Edit Menu

View Menu

Options Menu

Window Menu

Help Menu

New

New creates a new text file window named "Untitled".

Open... Ctrl+F12

Open opens an existing file. KeyPro can open and load files of any size provided there is enough system memory available. If a file is opened that is too large to load into system memory, KeyPro will display the message, *"Not enough memory to open file. Please exit one or more applications and try again."* When a file has more than 32,767 lines, the file is truncated down to 32,767 lines in order to accommodate Windows' scroll bar range limit of 32,767. In this case, KeyPro displays the following message, *"Cannot open the file because the number of lines exceeds Windows' scroll bar range limit of 32,767."* A truncated version of the file will be loaded and displayed. The user may then proceed to edit this truncated version of the file if desired, or else abandon the editing task by closing this truncated version of the file without saving it.

The maximum number of characters per line is 251. When KeyPro encounters lines having over 251 characters, it displays a dialog box saying, *"Line <n> is too long and will be truncated."* (with ABORT, RETRY, and IGNORE buttons). To close the file, select ABORT. To continue loading the file, select either RETRY or IGNORE. IGNORE will suppress any further prompts regarding excessive lines whereas RETRY will not. When truncating lines, the extra characters on the line are automatically discarded. All tab characters are kept and expanded in the text window according to the tab stop value setting in the Environment dialog box.

Close

Close closes the currently active child window. It is the equivalent of clicking the minus button of the corresponding child window.

When closing a file that has been changed after opening, KeyPro will automatically prompt the user whether to save that file (that is, provided that the Ask Before Save option is checked in the Environment dialog box: this is the initial default setting.) If YES is selected, the file will be saved.

Save

Shift+F12

Save saves the file associated with the currently active child window. If the file already exists, it is automatically overwritten. Any trailing spaces on lines are deleted and all tab characters are kept.

Save As...

F12

Save As prompts for the file name to be given to the file. If the name is valid, it saves the file associated with the currently active child window using the specified file name. If the file already exists, it is automatically overwritten. All trailing spaces on lines are deleted and all tab characters are kept.

Save All

Save All saves all opened files, and prompts for the file names for any untitled files.

Print

Ctrl+Shift+F12

Print invokes the **Print** dialog box. A device list box is displayed to allow the desired printer to be selected from a list of currently installed printers. The **Set Up** button invokes the printer setup dialog box for the selected printer. The **OK** button sends all text in the currently active child window to the selected printer device using the default printer font (not the screen font). Lines whose lengths exceed the page border are truncated. The **Printing** dialog box is displayed while the file is printed. To cancel the print job, select the cancel button in this box.

Exit

Alt+F4

Exit exits KeyPro, prompting whether to save certain files that have changed since they were opened. If the Cancel button is selected from the prompt box, the exit operation is canceled.

Cut

Shift+Del

Cut copies the selected block of text to the clipboard and deletes the text from the file. This is the same as performing a **Copy** followed by a **Delete**.

Copy

Ctrl+Ins

Copy copies the selected block of text to the clipboard.

Paste

Shift+Ins

Paste inserts the contents of the clipboard (if it is text) into the active window's text file at the caret's position.

Delete

Del

Delete deletes the selected text block in the active window, or the character at the caret position if no text is selected.

Find

Shift+F3

Find searches for the specified text in the active window. If found, the text is selected and the screen is scrolled vertically to bring the text into view. To find the next occurrence of the specified string, press **F3**.

Replace

Replace displays a prompt requesting a search text string and replace text string. If **Find Next** button is then selected, it finds the first occurrence of the specified text in the active window and prompts whether to replace the text with the replacement text. If **Replace All** is selected, all occurrences of the specified text are replaced without prompting first.

Read Only

Read Only, if checked, prevents text from being typed into the active window.

Line...

Line moves the caret in the active window to the specified line and scrolls the line into view.

Toolbar

Toolbar, if checked, causes the the toolbar to be displayed. The toolbar contains font and point size controls used to select the current font.

Status Bar

Status Bar, if checked, causes the status bar to be displayed. The status bar displays the position of the caret in the active window, in terms of its column number and line number.

Fonts...

Fonts displays a list of type face and point sizes, with the currently selected font highlighted. A sample of the selected font is displayed. Selecting **OK** causes the text in all windows to be displayed in the selected font.

Colors...

Colors displays a box showing color buttons, with the currently selected foreground and background color buttons highlighted. The colors can be changed by clicking different color buttons and choosing **OK**. The **Items** box indicates which window item the colors are to be applied (Version 1.2 only allows the text color to be changed, hence the Items box only contains "Text").

Environment

The **Environment** dialog box allows miscellaneous editor settings to be changed. The **Tab Stop Value** determines the tab positions in terms of spaces. The range of valid tab stop values is 0 to 32. The **Save Environment** setting, when checked, causes all options (font, colors, tab stops, etc.) to be saved (upon closing) in the **keypro.ini** file in the windows system directory. KeyPro creates this file if it doesn't already exist. The contents of this file determines the initial settings of all options when KeyPro first begins executing. The **Ask Before Saving** option determines whether KeyPro displays a prompt when an attempt is made to close a file that has changed since it was opened. Choosing YES causes the file to be saved and then closed; choosing NO causes the file to be closed without saving it; choosing CANCEL cancels the close operation. The scroll bars settings determine whether the corresponding scroll bars are to be shown or hidden.

Cascade

Cascade rearranges the windows in a overlapping cascading fashion.

Tile

Tile rearranges the child windows in a non-overlapping fashion with all windows having maximum equal size.

New

New creates a duplicate window of the active window that shares the same text. All changes to the text in either the original window or the duplicate window directly affects the other window. However, the changes will not be seen in the other window unless it is redrawn either by scrolling the other window or by minimizing and then maximizing the other window.

Contents

F1

Contents invokes Windows Help with the KeyPro help file loaded and displays the table of contents.

Search

Search invokes Windows Help with the KeyPro help file loaded and displays the search dialog box displaying available topics.

About

About displays copyright and version information regarding KeyPro plus system information.

Technical Specifications

FILE SIZE LIMIT: None
MAXIMUM NUMBER OF CHARACTERS/LINE: 251
MAXIMUM NUMBER OF LINES PER FILE: 32,767
NUMBER OF OPENED FILES LIMIT: None
SYSTEM REQUIREMENTS: An IBM 80286 compatible with DOS 4.0 and
Windows 3.1 and above operating systems.
CARRIAGE RETURNS: 0DH, 0AH
FONTS: All installed regular type faces
with point sizes in the range of 8 to 28

New

Open

Close

Save

Save As

Save All

Print

Exit

Cut
Copy
Paste
Delete

Find
Replace

Read Only

Line

Toolbar

Status Bar

Tile
Cascade
New

Environment...
Colors...
Font...

Contents
Search

About

About *KeyPro*

KeyPro Text Editor

Version 1.02

Copyright © 1993 Eric Grass

Known Bugs

When the same text is being displayed in two different child windows (as the result of selecting **Window | New**) and a change is made in one of the windows, the change cannot be seen (immediately) in the other window until it is repainted by Windows (that is, the changed text in the other window is invisible). Windows repaints a window whenever the window is scrolled or is covered and then uncovered by another window. It is therefore advisable when changing a window that has a sibling that the user periodically scrolls the other twin window up/down a page and back (or else minimizes and then maximizes it) in order to see the changes.

The point size shown for a particular font may differ from that shown by other applications for the same font. The formula used to compute point sizes is:

$$\# \text{ points} = \frac{(\text{font height in pixels}) (72 \text{ points/inch})}{\# \text{ pixels/inch for given computer}}$$

Improvements which would enhance KeyPro include File Manager drag and drop support, faster text search and replacement, text selection via the mouse, word wrapping, line deletion via the delete key, context-sensitive help, and case-insensitive text searching.

License and Warranty Disclaimer

KeyPro is copyrighted © 1993 by Eric Grass. Use of this software beyond a 30-day trial period is prohibited. A single registered copy of KeyPro 1.2 can be obtained from the author for \$39.95, plus \$3.50 for shipping and handling if shipped in the U.S.A., \$5.00 if in Canada or Mexico, \$9.00 if shipped elsewhere. Registered users will receive a floppy disk and manual and be allowed to use KeyPro for an unlimited amount of time, plus receive bug fixes (in the event of serious bugs) and upgrade offers to possible future versions. To register, fill out and send the enclosed form (or a facsimile thereof) in the file **kpmanual.wri** with the appropriate payment to the address below.

You may freely distribute the shareware version of KeyPro 1.2 (which has an opening banner displaying the words "*Shareware Version*" and the word "Unregistered" in the about dialog box) provided that no fee is charged for copying, distribution, or use, and that it is unmodified and distributed with all of its original accompanying files and documentation. Registered copies of KeyPro (which have an explicitly denoted registration number in the About dialog box) may **not** be copied or distributed in any way or form. Eric Grass disclaims all warranties, express or implied, including but not limited to warranty of merchantability or fitness for a particular purpose, and will not be liable for any damages resulting from the use of this software, including loss of data. Use this software at your own risk.

Send all inquiries, questions, comments, and suggestions concerning KeyPro to:

Eric Grass
1612 Gettysburg Landing
St. Charles, MO 63303
(314) 928-7803

Internet: s876795@umslvma.umsl.edu

Editor Keys

| | |
|-------------------|--|
| ALT+F4 | Exit command. |
| ALT+n | Activates the font control box of the toolbar. |
| ALT+s | Activate the point size control box of the toolbar. |
| (arrow keys) | Moves the caret in the corresponding direction. |
| BACKSPACE | Deletes the character preceding the caret, or if the caret is at column 1, joins the current line with the line above. |
| (character key) | Inserts the given character into the text at the caret. |
| CTRL+INS | Copy command. |
| CTRL+F12 | Open command. |
| CTRL+SHIFT+F12 | Print command. |
| DELETE | Deletes the character at the caret, or the selected block of text if any. |
| ENTER | Splits the current line at the caret position into two lines. |
| F1 | Invokes Help. |
| F3 | Find next command (finds the next occurrence of the string entered for the Find command). |
| F12 | Save As command. |
| HOME | Moves the caret to the first column of the current line. |
| END | Moves the caret to the last non-space character of the current line. |
| PAGE UP | Scrolls upward n lines, where n is the number of lines which fit in a window. |
| PAGE DOWN | Scrolls downward n lines, where n is the number of lines which fit in a window. |
| SHIFT+(arrow key) | Selects text. |
| SHIFT+DEL | Cut command. |
| SHIFT+F3 | Find command. |
| SHIFT+F12 | Save command. |
| SHIFT+INS | Paste command. |

